



21 Piercy End

Kirkbymoorside, YO62 6DQ

Offers Around £140,000



21 Piercy End

Kirkbymoorside, York, YO62 6DQ

Offers Around £140,000



This stunning cottage is an attractive double fronted stone built property in the heart of kirbymoorside, a picturesque market town situated within the North York Moors National Park. The property benefits from gas central heating and a recently fitted wood burning stove. There is a fitted kitchen with space for a table and a pretty window seat. The sitting room is light and airy with wood burning stove and exposed ceiling beams and latch style door leading to the staircase. There are two large double bedrooms with built in storage, the bathroom has a modern white suite with an over-bath shower. Outside there is a space for a wheelie bin and parking is on street at the front of the cottage.

Kirkbymoorside has an excellent range of services and amenities, which includes a school, doctors and dentist surgeries, a bank, library, pubs, eateries and a range of shops including a weekly market. NO ONWARD CHAIN

Sitting Room

11'9 x 11'11 (3.58m x 3.63m)

Half glazed front door, west facing window, electric points, wood burning stove with feature oak lintel, understairs cupboard with cloaks area, door to stairs and opening to the kitchen diner.

Breakfast Kitchen

14'8 x 6'11 (4.47m x 2.11m)

East and West facing windows, tiled flooring, radiator, fridge/freezer, wall and base units, stainless steel sink unit, 4 ring gas hob with newly fitted oven, cooker hood, plumbing for washer.

Landing

East facing window, radiator, airing cupboard with racked shelving and housing combi boiler.

Bedroom One

15'1 x 10'2 (4.60m x 3.10m)

West facing window, sky point, built in wardrobes and radiator.

Bedroom Two

11'10 x 11'9 (3.61m x 3.58m)

Fitted wardrobes, sky point, radiator, west facing window.

Bathroom

Modern white suite comprising of wash hand basin

with light and shaver point, loe level WC, bath with rainfall shower over and separate attachment, radiator and west facing window.

Services

Gas, electric, water and drainage.

Council Tax Band B

Location

Kirkbymoorside is a pretty market town positioned at the foot of the North Yorkshire Moors National Park and close by to Dalby Forest offering access to idyllic countryside walks. The town offers a good range of local amenities. There are good bus links to Scarborough, York and Malton.



Road Map



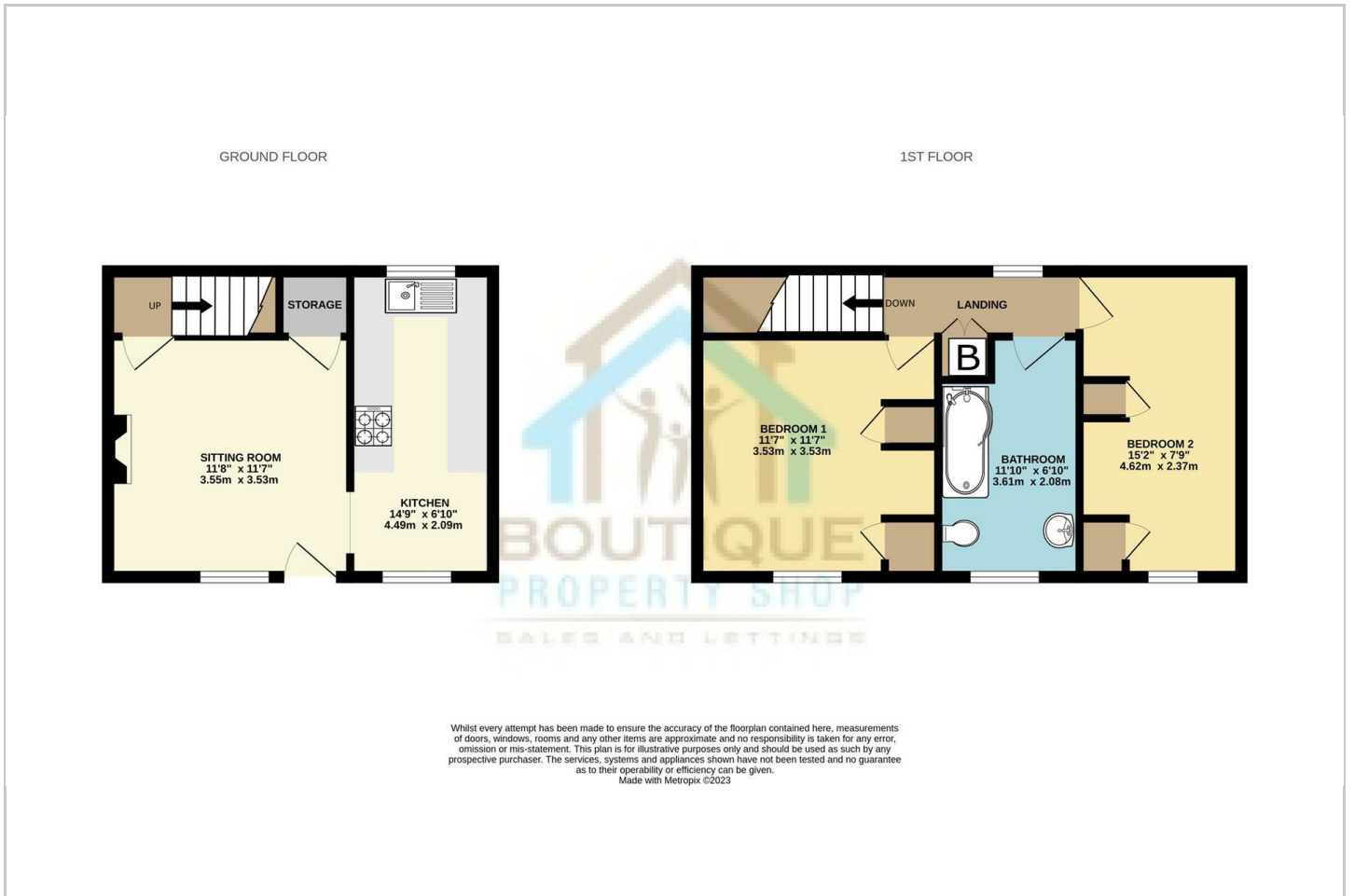
Hybrid Map



Terrain Map



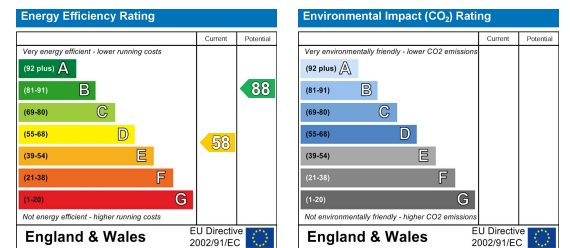
Floor Plan



Viewing

Please contact our Boutique Property Shop Office on 07515763622 if you wish to arrange a viewing appointment for this property or require further information.

Energy Efficiency Graph



These particulars, whilst believed to be accurate are set out as a general outline only for guidance and do not constitute any part of an offer or contract. Intending purchasers should not rely on them as statements of representation of fact, but must satisfy themselves by inspection or otherwise as to their accuracy. No person in this firm's employment has the authority to make or give any representation or warranty in respect of the property.